

INTRODUCTION

Congratulations on the purchase of your new Triple Shop. This Triple Shop has been designed to give you many years of dependable service. It requires little maintenance and is easy to set up and operate.

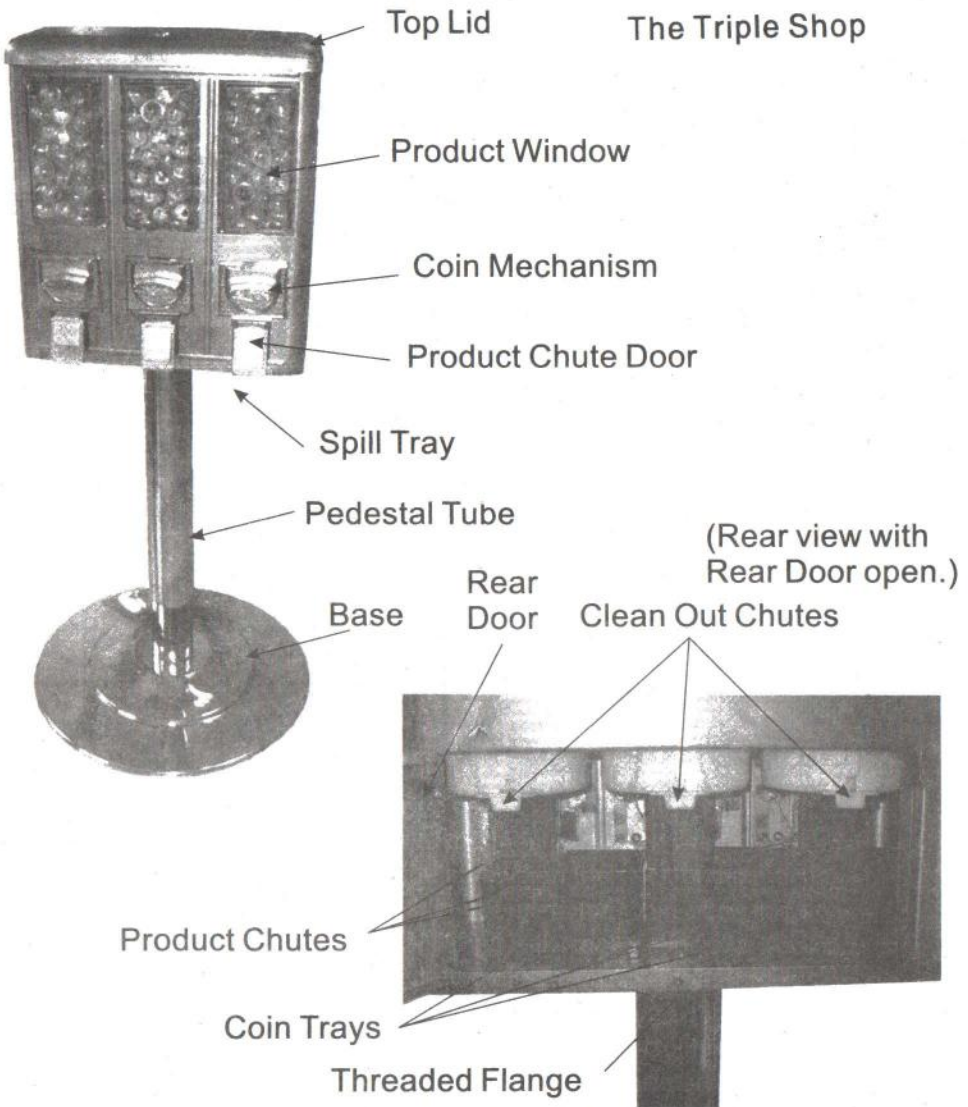
READ THIS MANUAL COMPLETELY

Your Triple Shop is designed to operate simply and reliably, but to take full advantage of the vendor, please read this owner's manual thoroughly. It contains important information regarding installation and operation, as well as a brief troubleshooting guide.

EQUIPMENT INSPECTION

After you have received your Triple Shop and have it out of the box, place it on a secure surface for further inspection. Note: Any damages that may have occurred during shipping must be reported to the delivery carrier immediately. Reporting damages and the seeking of restitution is the responsibility of the equipment owner. The factory is willing to assist you in this process in any way possible. Feel free to contact our Customer Care department with any questions you may have on this process.

Once you have your vendor located, we suggest that you keep this manual for future reference.



PEDESTAL ASSEMBLY

Place the threaded pedestal Tube into the threaded opening on the Base Plate and tighten.

MOUNTING THE CASE

Place the Threaded Flange (located on the bottom of the case) on top of the threaded Pedestal Tube. Tighten the entire assembly by securing the Base and turning the entire assembly clockwise.

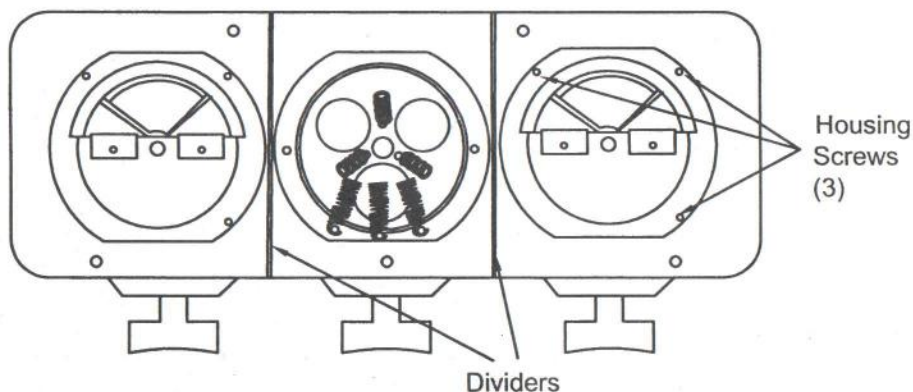
DELIVER SYSTEM

The Triple Shop comes standard with two (2) Pan Candy Wheels and one (1) Gumball Wheel.

SPECIAL NOTE: The Gumball Wheel accepts a maximum 1" gumball (850 Count). Additional Pan Candy or Gumball Wheels can be purchased by contacting our Parts Department.

1. To change wheels or wheel settings:
 - A.) Unlock and open top lid
 - B.) Remove the Dividers by lifting straight up
 - C.) Remove the three (3) Housing Screws to remove Wheel Housing. (Small Phillips screwdriver required) (Fig. 1)

Figure 1 looking down into the Case



- D.) To set your Pan Candy Wheel, place the Tab located on the Adjuster Plate (Fig. 2 Pg. 4) in the desired wheel setting notch. Ditch #1 (the notch to the far left) is for the largest smallest vends. (Fig. 2 Pg. 4)

E.) For gumballs or capsules, you will need to use the 1 1/16" Gumball Wheel and Housing (Fig. 3 Pg. 4). Adjustment of your Gumball wheel is done with a similar procedure as used when adjusting the Pan Candy Wheel. The Gumball Wheel however does not have notches as indicated on the Pan Candy Wheel. To adjust the Gumball Wheel, remove the wheel housing, loosen the three Adjustment Screws.

On top of the Gumball Wheel(Fig.3)located next to each gumball cavity. Turn the adjustment Wheel to adjust the opening according to the product being vended. Remember, nothing larger than a 1"(850 count)gumball or a 1"capsule be vended.

Figure 2 Pan Candy Wheel

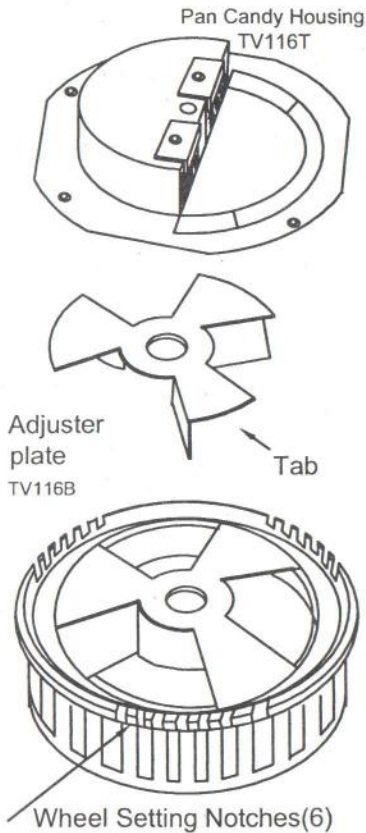
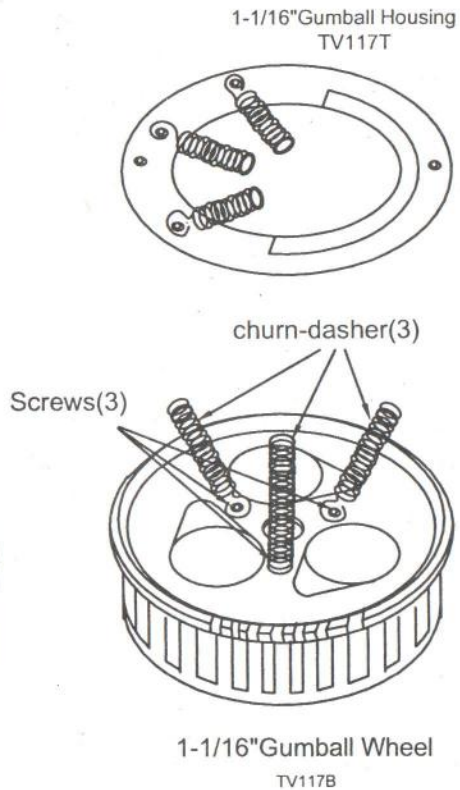


Figure 3 Gumball Wheel



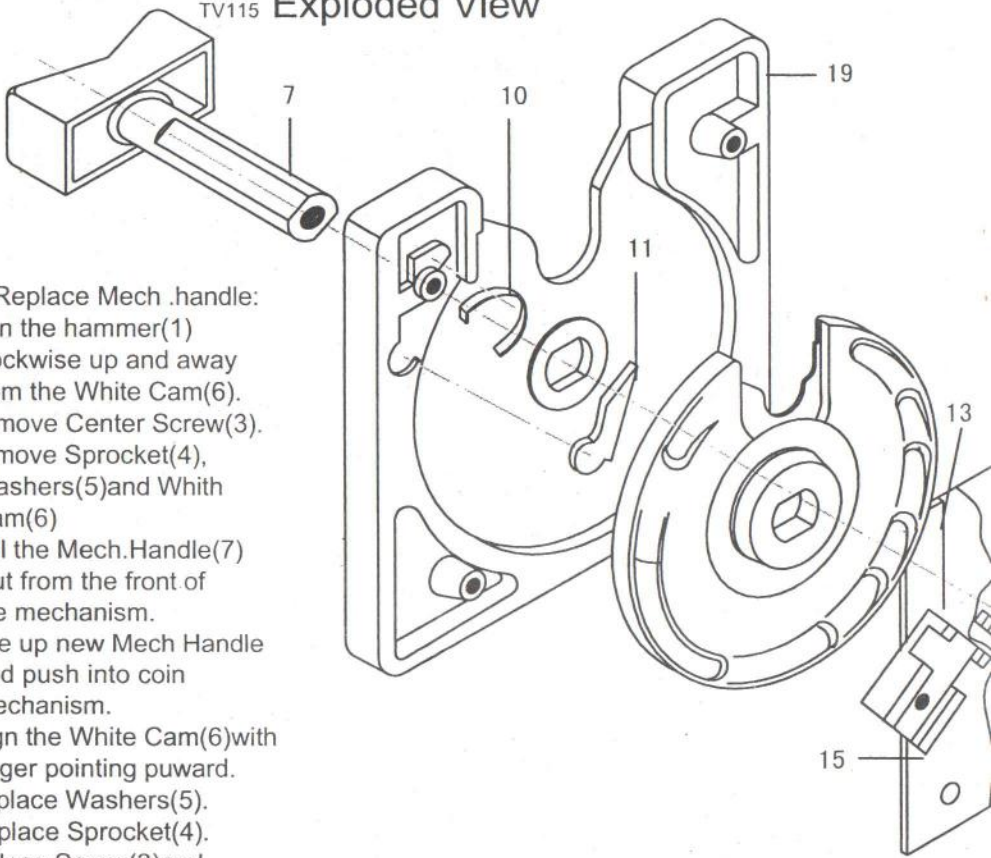
G.) Replace the dividers. Start the divider in the channel on the rear of the product Window. then slide the divider down between the four (4) tabs on the back of the case leaving two(2) tabs on either side of the divider.

Special Note: We suggest that you always partially fill each compartment with product and perform a test vend.

When your portion vends at the desired setting, continue filling the machine with product. Close the lid and you are ready to deliver the machine.

COIN MECHANISM Figure4 Coin Mechanism

TV115 Exploded View



1. TO Replace Mech .handle:
- A.) Turn the hammer(1) clockwise up and away from the White Cam(6).
- B.) Remove Center Screw(3).
- C.) Remove Sprocket(4), Washers(5)and Whith Cam(6)
- D.) Pull the Mech.Handle(7) Out from the front of the mechanism.
- E.) Line up new Mech Handle and push into coin mechanism.
- F.) Align the White Cam(6)with finger pointing puward.
- G.) Replace Washers(5).
- H.) Replace Sprocket(4).
- I.) Replace Screw(3)and tighten.
- J.) Return Hammer(1)to its staring position.

Part Identification list

1.Hammer	8.Cap Screw	14.Mounting Screw
2.Hammer Spring	9.Locking Lecer	15.Back Plate
3.Center Screw	10.Coin Detector Dog	16.Coin Wheel
4.Sprocket	Spring	17.Washer Detector
5.Washers(quantity may vary)	11.COin Detector Dog	18.Anti-Reverse
6.White Cam	12.Mounting Screw	"T"Pin
7.Mechanism Handele	13.Mounting Screw	19.Mechanism Face Plate

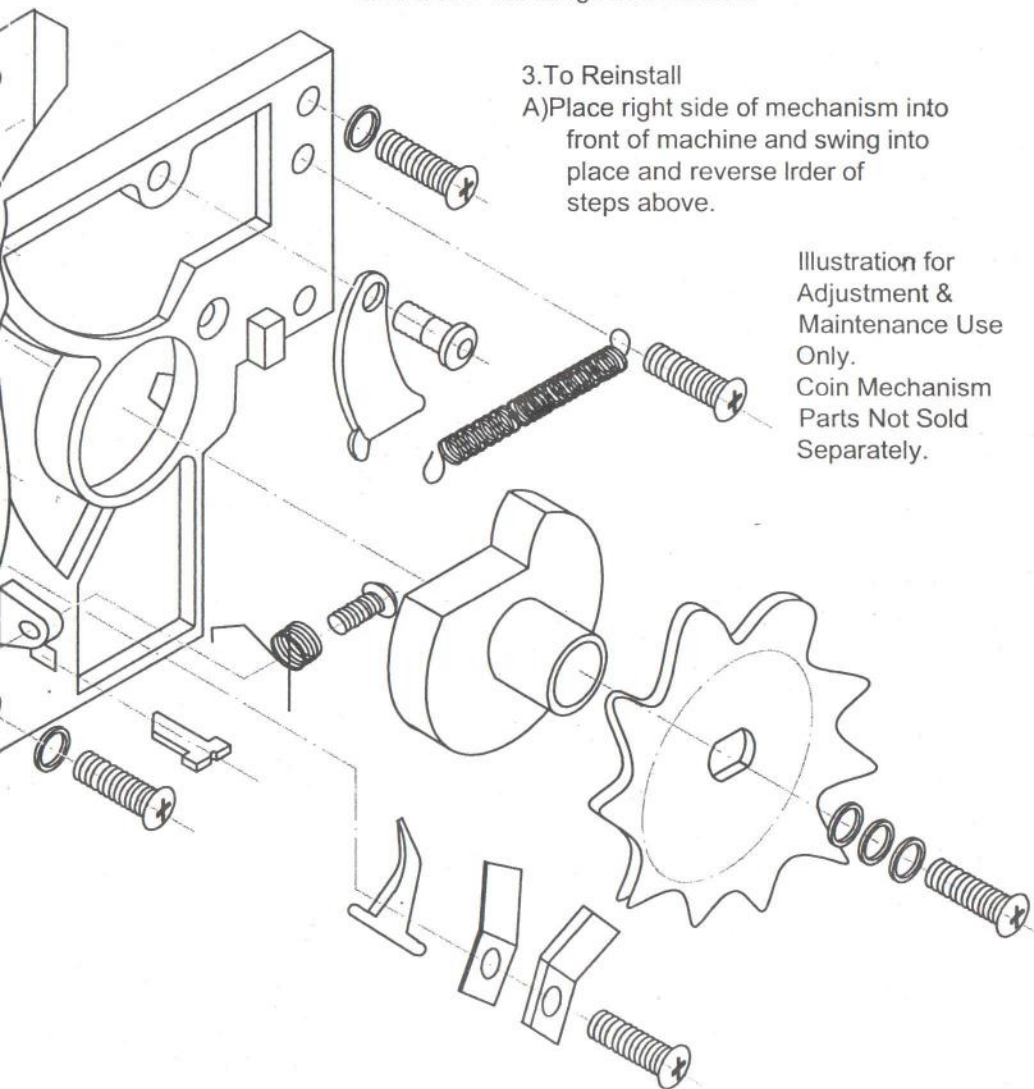
2.To Remove Coin Mechanism From Unit

- A)Unlock and open rear door
- B)Locate the backside of the desued coin mechanism inside the unit Locate and loosen the Cap Screw(8)so the Locking Lever(9)will move freely.
- C)From behind the machine reach around and hold the Mechanism Handle to prevent it from falling.With screwdriven turn the Locking Lever(9)clockwise so it clears the flange and remove.

3.To Reinstall

- A)Place right side of mechanism into front of machine and swing into place and reverse lrder of steps above.

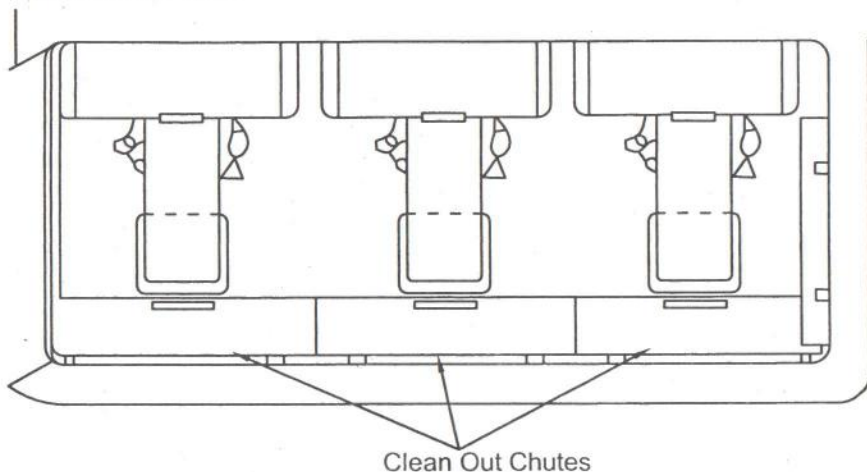
Illustration for
Adjustment &
Maintenance Use
Only.
Coin Mechanism
Parts Not Sold
Separately.



COIN RETRIEVAL

Three Coin Trays are provided with each Triple Shop which can be located by entering the rear of the unit. Enter the rear of the unit by unlocking RearLock, and opening the Rear Door. The Coin Trays should set flat in the bottom of unit with tabs facing door. These Coin Trays will accommodate both quarters and tokens. (Some iverflow may occur)

Figure 5 Coin Trays



COMMON QUESTIONS AND ANSWERS

VENDING

Q: How does my Triple Shop actually Vend?

A: Your vendor is a gravity-feed bulk vendor. Gravity feeds the product to the bottom of the unit. Maintaining fresh, non-melted product is essential.

Q: Can I always count on a 100% consistent vend?

A: Products that are consistent in size, plain M & M's will fluctuate. However all products will fluctuate somewhat.

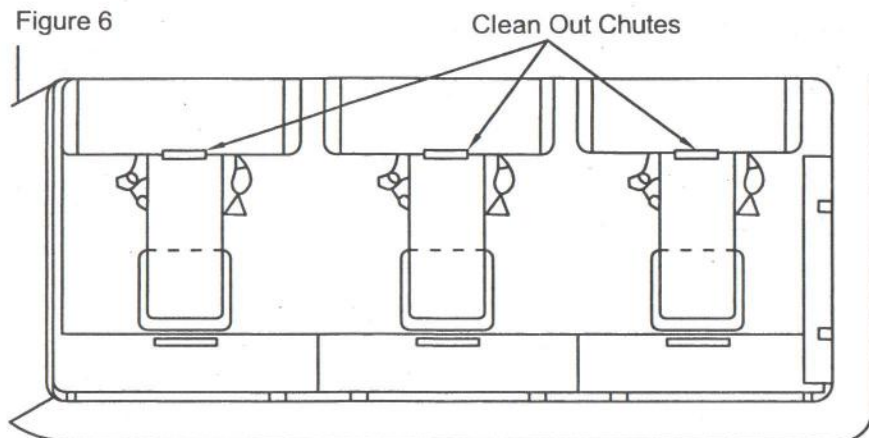
Q: Does each selection chamber to be full to vend properly?

A: No. A selection will dispense as long as there is product to vend.

Q: How do I remove product from one selection chamber?

A: Your Triple Shop comes equipped with clean outs for each selection. The Clean Out Chutes (Figure 6) can be accessed by first opening the back door. With the back door now open, the backside of the selection chamber will be right in front of you. The Clean Out Chute can now be pulled out and removed, releasing the product to remove. Have a container ready to put your product into.

Figure 6



Q: How do I set my portion?

A: Refer to Pg.3, Paragraph 1, Sections D and E

Q: What do I do if product becomes "gummed up" in my Triple Shop?

A: Each selection chamber dispenses independently from its adjacent selection chamber. Therefore, if one selection chamber has a problem such as jammed product, that particular selection chamber can be emptied out and cleaned. If your product is melted together and can not be taken out through the Clean Out Chute, scoop out the product from the top. Remove your dispensing wheel as described in the manual. Your wheel can now be cleaned, (hot water is recommended) and your product area wiped out. For severe cases, all products from all selection chambers may need to be removed and the entire unit cleaned.

Special Note: Selection chamber must be absolutely dry before loading with product.

OPERATION

Q: Can I use tokens in my Triple Shop?

A: Tokens can be used if they are the exact size and thickness as a quartet. Special mechanisms can be ordered from the Parts department.

Q: How do I retrieve a bad or incorrect coin from my mechanism?

A: If coin can not be retrieved from mechanism by plucking it from the front, the mechanism will need to be removed and the coin dumped out. Refer to "Coin Mechanism " section of manual. (Pgs. 5-6)

Q: How many quarters will my Coin Trays hold?

A: Remove mechanism and investigate a couple of possibilities. First, the Anti- Reverse "T" Pin (#18 Pgs. 5-6) may be loose, missing or has rounded off on the point that engages the wheel inside of the mechanism. Second, the Hammer and Hammer Spring (#'s 1 & 2 Pgs 5-6) may be loose or mis-aligned.

Q: What do I do if my mechanism rotates fully with an incorrect coin or no coin?

A: Remove the mechanism as described on page 6. First check to see if the screws on the back of the mechanism are tight. If the problem persists the Coin Detector Dog and Spring (#'s 10 and 11 Pgd 5-6) may be loose or missing. These parts can be reached by first removing the Sprocket assembly and removing Mounting Screw 12, 13, and 14. Remove Mechanism Back Plate (15) and Coin Wheel (16). The Coin Detector Dog Spring may need to be stretched out a bit to create more tension.

- Q: Can I remove my handle if it breaks.
A: Yes. Refer to " To Replace Mech. Handle " on Pg 5.

Q: Will my mechanism ever require lubrication? If so, how do I lubricate it ?

- A: Lubricate on an "as needed basis ". To do so, you do not need to open the rear of the machine, simply place a quarter in the mechanism and rotate the handle 1/4 turn . In the coin slot place a small drop of lubricating oil on each side of the exposed Coin Wheel and complete the handle rotation . A couple of rotations may be necessary to " loosen " up the turning of the mechanism .

MAINTENANCE

Q: How do I clean the outside of my Triple Shop ?

- A: A non lint depositing rag or towel and a little window cleaner will be sufficient to clean the outside of your Triple Shop . A clean well-stocked machine is an inviting machine !

Q: Can I replace my Spill Tray if it becomes bent or in need of replacing ?

- A: Yes . The Spill Tray is bolted on from the underneath side of your vendor .

Q: Can toys and other trinkets be vended from my Triple Shop ?

- A: Capsules that are equivalent up to a 1 " gumball (850 Count) and consistently round can be vended through the Gumball Wheel .

MANUFACTURER'S WARRANTY

WHAT IS COVERED:

Manufacturer warrants TO THE ORIGINAL PURCHASER ONLY that each item of equipment manufacturee is free from defects in material and workmanship under normal use and service . Manufacturer's obligation under this warranty shall be limited to repair or replacement, at our plant, of any parts of the equipment which shall , within one year of the date of shipment to the original purchaswr, be demonstrated to be defective . The original purchaser may obtain repair or replacement of the equipment under this warranty by returning the defective iten or entire Triple Shop to the Manufacturer, freight prepaid .

WHAT IS NOT COVERED:

Manufacturer's warranty obligations DO NOT EXTEND TO OR INCLUDE installation expenses , vandalism, or difficulties resulting from failure to operate equipment in accordance with Manufacturer's instructions under competent supervision and difficulties due to changes in vended products which are beyond the control of Manufacturer .

SPECIAL NOTE: Manufacturer is mot responsible for any loss of income due to a vending machine being out of service due to a warrantable item .

This warranty is in lieu of all other warranties, expressed or implied, including the warranty of merchantability and fitness or use, and of all other obligations or liabilities on Manufacturer's part . Manufacturer neither assumes, nor authorizes any other person to assume for it , any other liability in connection with the sale of equipment manufactured by itself . This warranty shall not apply to equipment manufactured or any part thereof which is subject to accident , negligence , alteration , abuse , misuse or damage in shipment . The term "original purchaser , " as used in this warranty , shall be deemed to mean that person for whom the equipment is originally installed .

Manufacturer is not liable for any incidental , consequential or other damages of any kind whatsoever , directly or indirectly , arising from the use of the equipment whether based upon theories of contract negoigence or tort .

Effective 9/01